

Technische Informationen – Saal - Licht

Venue Information – Big Venue - Lighting

Lampen/Lamps

Konventionell

TEC Curva Profiler, 1000 W, 18°-36°	4x
Showtec Profile 750 26° ,mit Einschub-Iris, 600 W	2x
Showtec Profile 750 19° 600 W	2x
ETC S4 jr. 25°-50°	2x
TEC Curva PC 1000W	20x
Coemar Passo PC 1000W	5x
Scanner SGM Victory 2	6x
Verfolger/Follow Spot TEC Arena plus 2000	1x
PAR64 1000W Floorspots	6x
Par 64 1000 W CP61	24x
ACL Unit a 2x 4 x Par 64 28 V	1x
Blinder 2x 4-cell	1x
Stroboskop Martin Atomic3000	2x

LED

Moving Light GLP Spot One	6x
Moving Light Wash GLP X4s	14x
Expolite ELF 24 CM, 8x3in1W LED Rampe 16°	10x
Litecraft LEDStudioPAR AT3Pro Floorspots	8x

Dimmer

fix

4x MA Digital Dimmer 12 x 2,3 kW	4x
----------------------------------	----

mobil

Zero88 Betapack3 6 x 2,3 kW	2x
-----------------------------	----

Lichtpult/Lighting Desk

MA Lightcommander II 24/6
Grand MA1 Ultralight
Chamsys MQ80

Haze & Fog

Hazer Look Unique 2	2x
Martin Magnum Pro 2000 non-DMX	1x

Beamer

Panasonic PT-EZ580 5000 ANSI mit Standard- und ET-ELW20-Objektiv

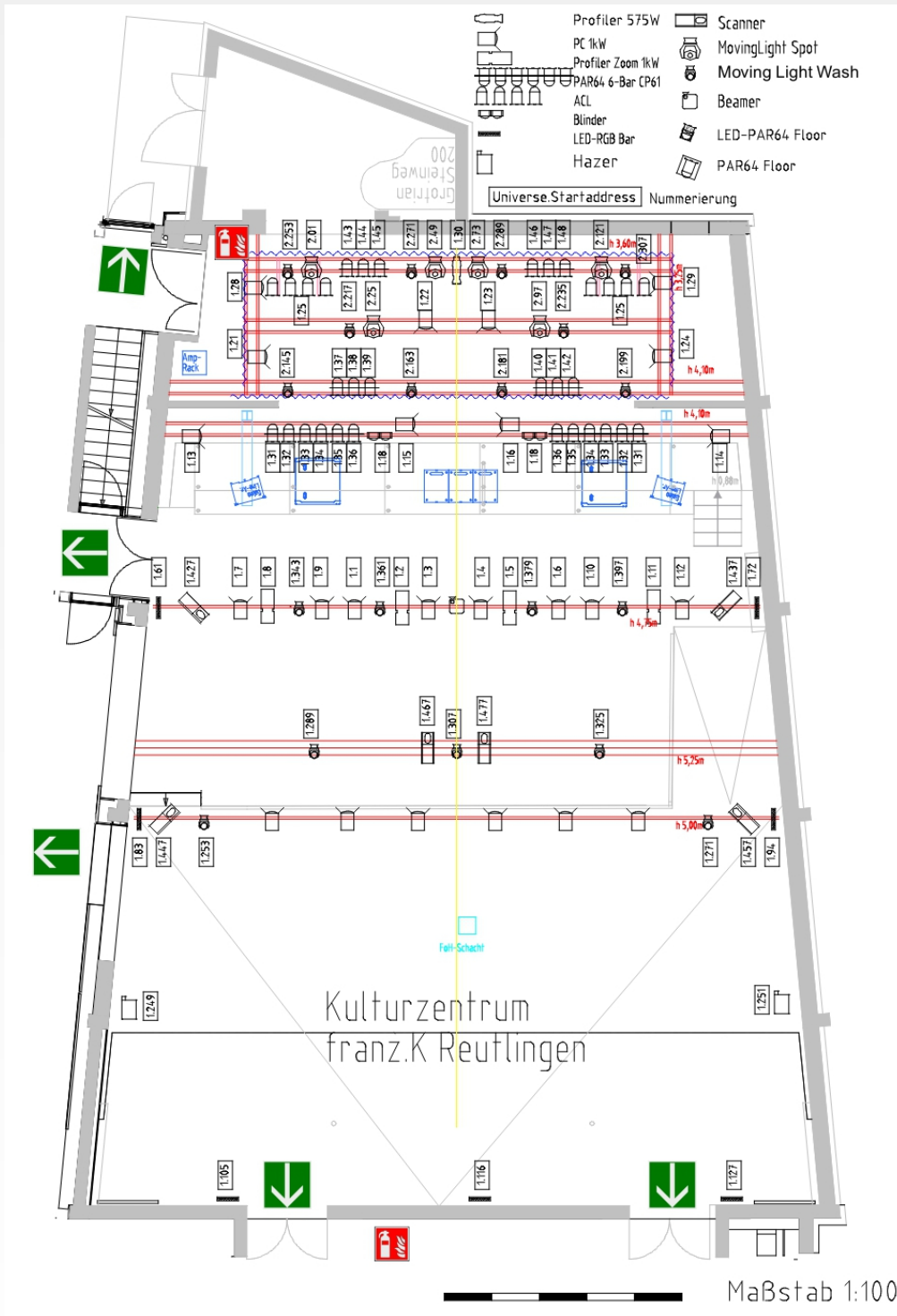
LEE-Filters

Teilweise nur wenige Exemplare / sometimes only few filters

021	Gold Amber	156	Chocolate
027	Medium Red	161	Slate Blue
029	Plasa Red	180	Dark Lavender
071	Tokyo Blue	200	Double CTB
079	Just Blue	202	Half CTB
101	Yellow	204	CTO
103	Straw	219	Fluorescent Green
104	Deep Amber	363	Special Medium Blue
105	Orange	652	Urban Sodium
106	Primary Red	707	Ultimate Violet
111	Dark Pink	711	Cold Blue
113	Magenta	719	Colour Wash Blue
116	Medium Blue Green	729	Scuba Blue
118	Light Blue	781	Terry Red
120	Deep Blue	787	Marius Red
122	Fern Green	797	Deep Purple
124	Dark Green		
126	Mauve		
127	Smokey Pink		
128	Bright Pink		
132	Medium Blue		
134	Golden Amber		
135	Deep Golden Amber		
136	Pale Lavender		
138	Pale Green		
139	Primary Green		
141	Bright Blue		
152	Pale Gold		
153	Pale Salmon		
201	Full CTB		

Patch-Plan

Größere Version auf Anfrage / big Version on demand



Schnitt / Profile view

